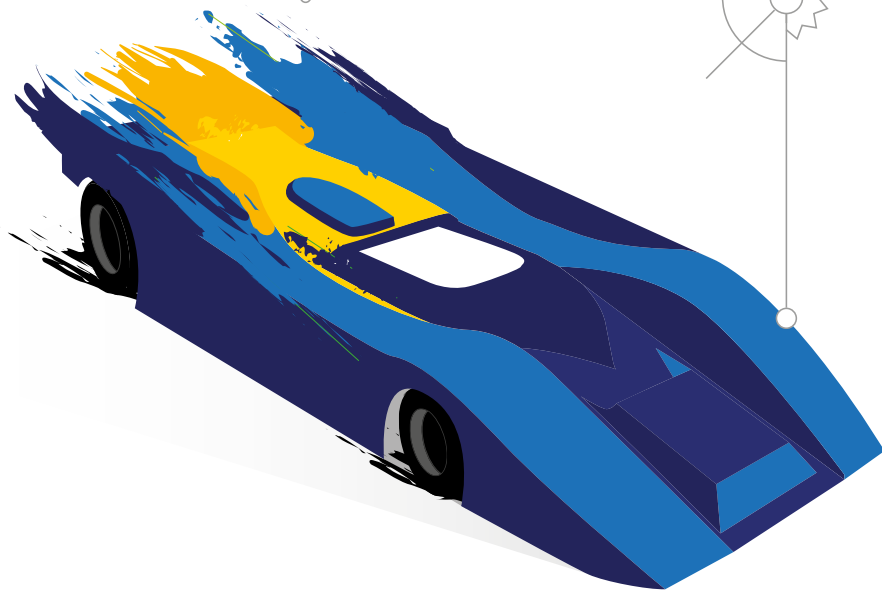


PLAFIT24

premier class

SPORTS/GT & CAN-AM CARS





Note: Same specifications as SAMCA Scale 24 Class

BODIES

- a. Any 'classic' Sports/GT (up to and including 1979) and Can-Am cars (up to and including 1973) are eligible.
- b. Bodies shall be reasonably accurate 1/24th scale representations of actual cars and painted or otherwise finished in a presentable manner, with transparent or tinted windows, where applicable.
- c. Colour schemes do not have to replicate actual cars.
- d. Bodies shall have cut out wheel arches.
- e. Bodies shall have, in the appropriate position, a presentably painted 3-dimensional driver figure consisting of at least head, shoulders, hands and the upper half of a steering wheel.
- f. Bodies shall clearly display at least two racing numbers.

CHASSIS

- a. Only Plafit 1700 series chassis may be used.
- b. The standard main chassis plate of the 1700 chassis may be replaced with the following Plafit extended chassis plates; 1701B (**+10mm**), 1701B15 (**+10mm, 1.5mm**) or 1701C (**+20mm**) only.
- c. The standard sub-frame of the 1700 chassis may be replaced with the following Plafit extended sub-frames; 1710B (**+6mm**) or 1710C (**+12mm**) only.
- d. The standard body mounting may be replaced using Plafit 1706 and 1707 series body mounting plates.
- e. Front and rear bearing holders (pillow-blocks) may be replaced with different height Plafit 1700 series pillow-blocks. Pillow-blocks may be shimmed.
- f. No carbon fibre components permitted.
- g. No magnetically-aided traction is allowed whatsoever.
- h. Weight / ballast may be added to the top of the chassis.
- i. The chassis, including the guide flag, wheels and tyres, shall not project from the body, nor be visible when viewed from above.
- j. No part of the car except braids and tyres shall touch the track when stationary. Front tyres must touch the track surface.
- k. Maximum width measured across the outer edges of the front and rear wheels is **80mm**.
- l. Axle ball bearings are permitted.
- m. Only 3mm diameter rear axles may be used.
- n. Any guide flag may be used.

WHEELS & TYRES

- a. Rear tyres shall be made from black foam rubber.
Minimum diameter **23mm** / Maximum diameter **27mm** /
Maximum width **16mm**.
- b. Front tyres shall be made from black rubber.
Minimum diameter **21mm** / Minimum width **6mm**.

GEARS

Any 10 tooth pinion and 36 or 38 tooth gear may be used.

MOTORS

ONLY JK Products ref. M25 Hawk 25 motors, laser etched '25 25 25 25' are allowed. Motors may not be opened or modified in any way, except the armature shaft may be shortened.